

FCUBS Application Deployment in Websphere
Oracle FLEXCUBE Universal Banking

Release 14.3.0.0.0

[May] [2019]



Table of Contents

- 1. FLEXCUBE UNIVERSAL BANKING SOLUTIONS..... 1-1
 - 1.1 APPLICATION FULL DEPLOYMENT..... 1-1
 - 1.2 UBS APPLICATION PARTIAL DEPLOYMENT..... 1-8

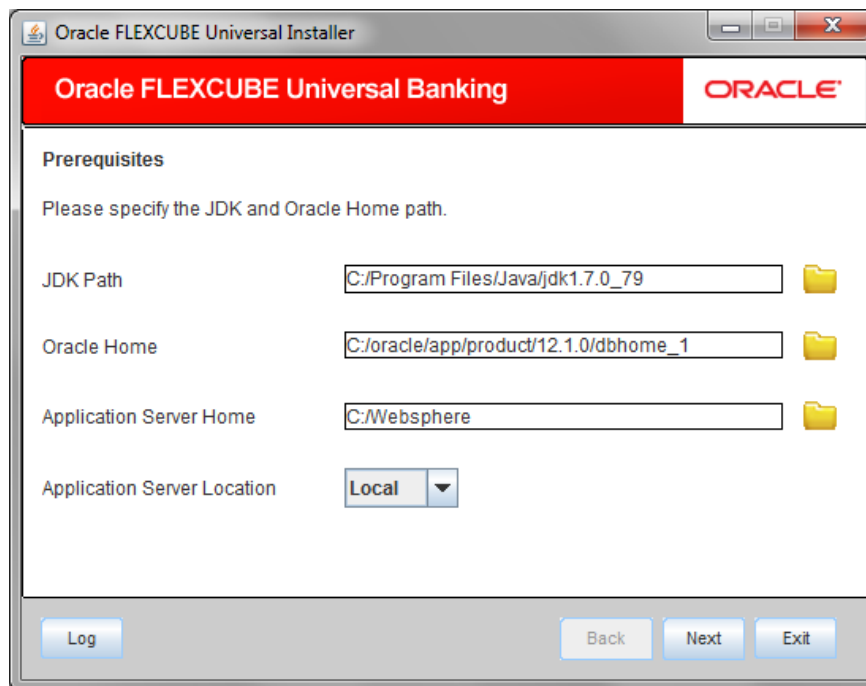
1. FLEXCUBE Universal Banking Solutions

This document describes step to install FCUBS application into weblogic server in full and partial deployment modes.

Please refer the document “FCUBS_Manual_Deployment_WAS” for additional configuration which needs to be done after deployment.

1.1 Application Full Deployment

1. Launch Oracle FLEXCUBE Universal Banking Solution Installer.



Enter the following details

JDK Path:

Provide Home folder path of JDK1.7

Oracle Home

Provide home folder path of Oracle Client or Database

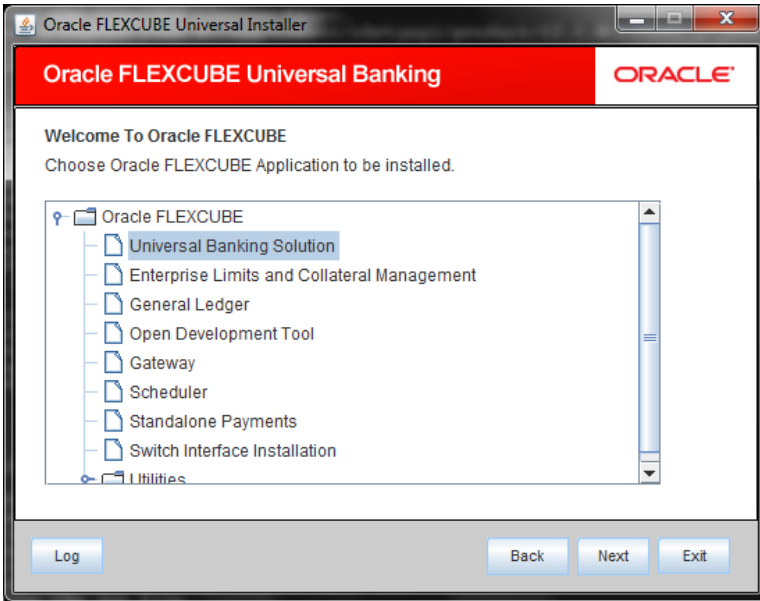
Application Server Home

Provide home folder path of Application Server

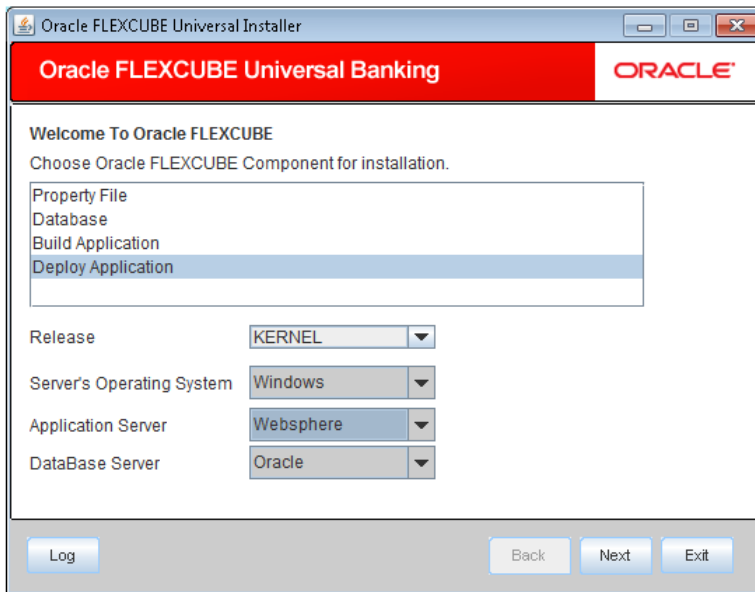
Application Server Location

Select location of the application server either local or remote

2. Click 'Next' and the following screen is displayed:



3. Select 'Universal Banking Solution'.
4. Click 'Next' and the following screen is displayed :



5. Select 'Deploy Application'.
6. Specify the following details:

Release

Select the release in which you are installing the FCUBS application. Select the appropriate one from the adjoining drop-down list.

Server's Operating System

Select the server's operating system in which you are installing the FCUBS application. Select the appropriate one from the adjoining drop-down list.

Application Server

Select 'Websphere' from the adjoining drop down list.

Database Server

Select the database server in which you are installing the FCUBS application. Select the appropriate one from the adjoining drop-down list.

7. Once you have specified all the details , click 'Next' and the following screen is displayed:

Name	Value
Admin IP	Not Applicable
Admin Port	Not Applicable
Admin Username	websphere
Admin Password

8. Specify the following details:

Admin IP

Not applicable.

Admin Port

Not applicable.

Admin UserName

Specify the appropriate admin username of the weblogic application server.

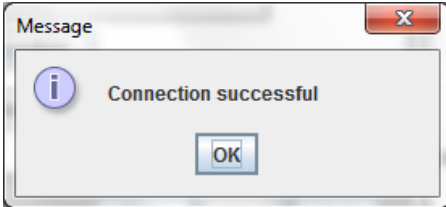
Admin Password

Specify the appropriate admin password of the weblogic application server.

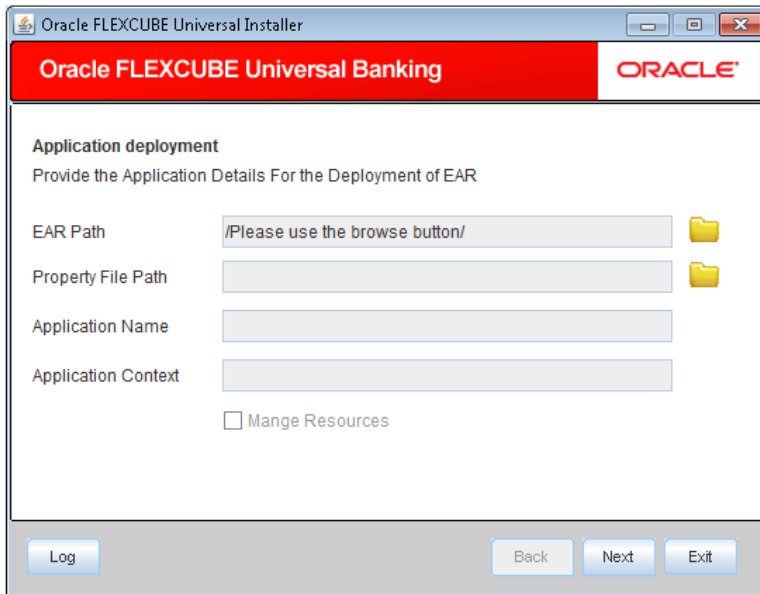
Type of Deployment

Select 'Full Deployment'.

- Click 'Test Connection' to test the connection with the application server. On successful connection, the following screen is displayed:




- Click 'OK' and the following screen is displayed:



- Specify the following details:

EAR Path

Specify the application EAR to be deployed using the browse button.

 The Application EAR path cannot be copied and pasted on to the text box, thereby demanding the use of the browse button to the select the EAR.

Property File Path

If the property file is internal to the application EAR, it gets displayed here on selection of EAR path. If the property file is external, specify the location. You can use the directory button to browser and select the directory.

Application Name

Application name gets displayed on selection of EAR path.

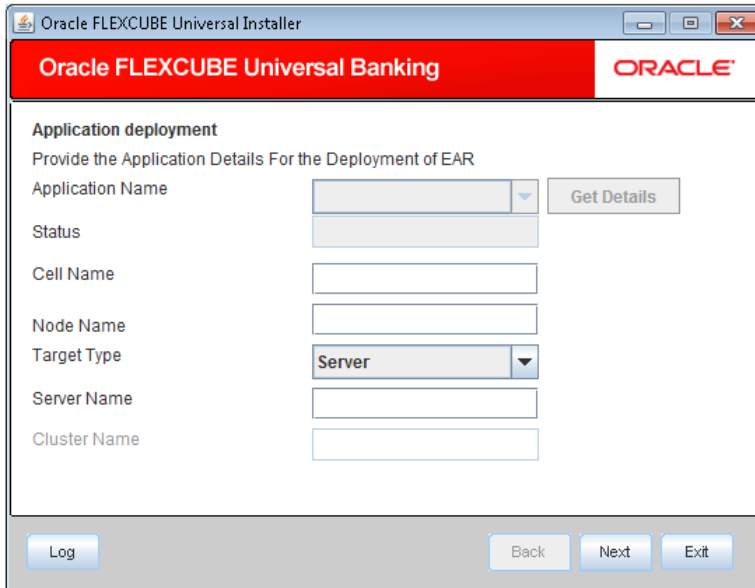
Application Context

Application context gets displayed on selection of EAR path.

Manage Resources

Check this box if resources are to be created along with deployment.

12. Click 'Next' and the following screen is displayed:



13. Specify the following details

Application Name

Not applicable for application full deployment.

Status

Not applicable for application full deployment.

Cell Name

Specify the appropriate Cell Name.

Node Name

Specify the the appropriate Node Name.

Target Type


Specify the the appropriate target type.

Server Name

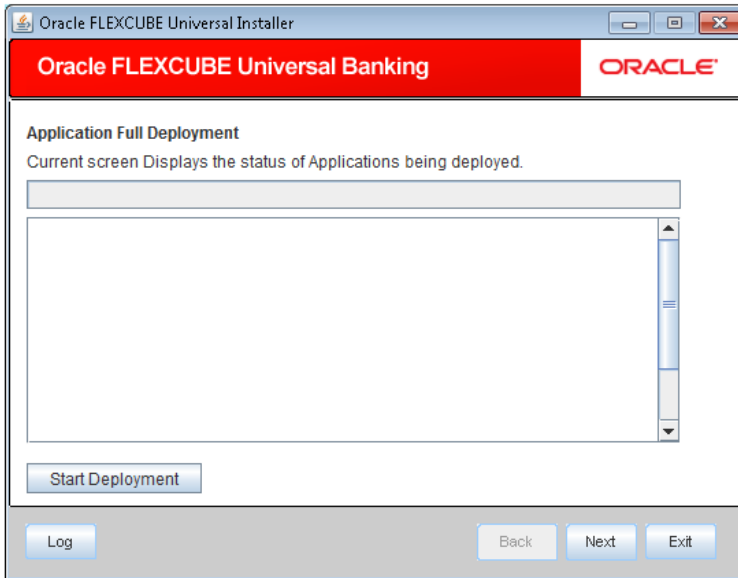
Specify the the appropriate server name, if the selected target type is 'Server'.

Cluster Name

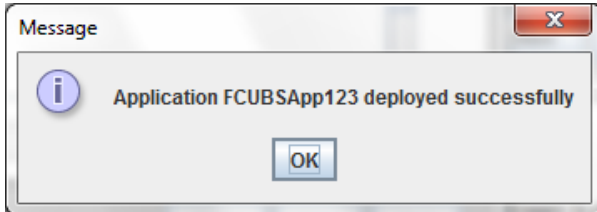
Specify the appropriate cluster name, if the selected target type is 'Cluster'.

 The values fed in the above screen are not validated at the screen level as a result of a limitation and hence, please provide accurate information.

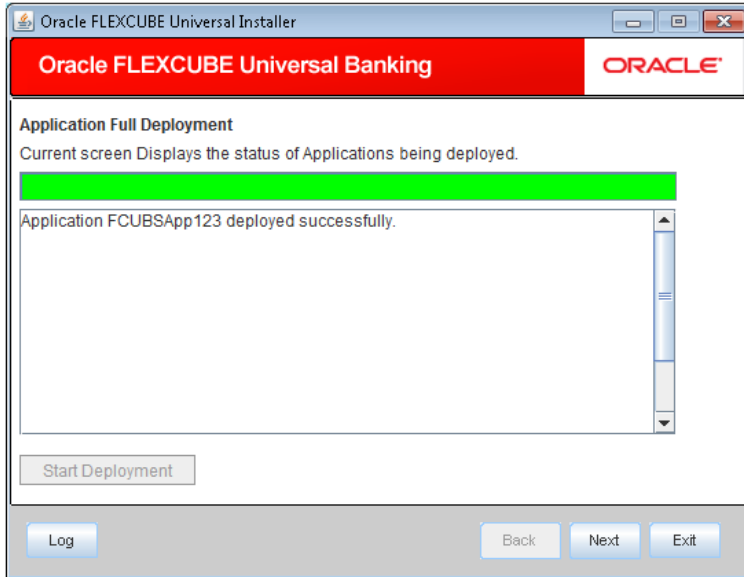
14. Click 'Next' and the following screen is displayed:



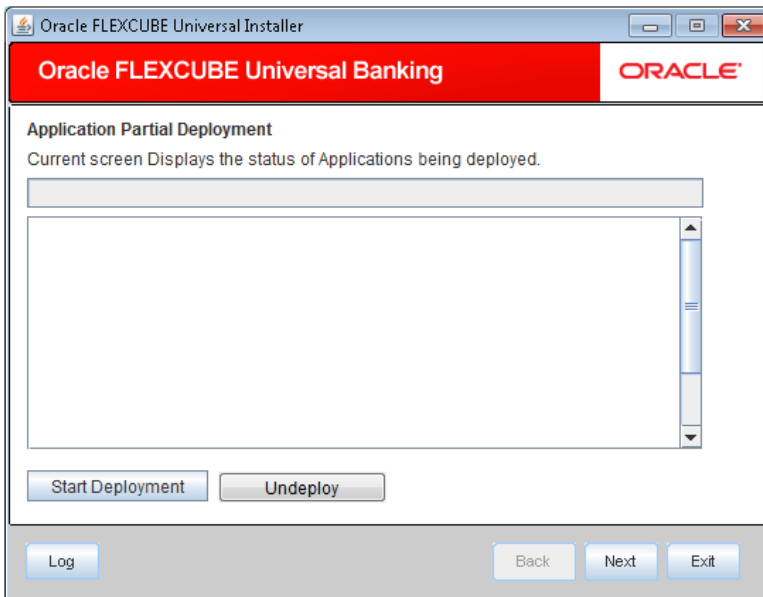
15. Click on 'Start Deployment' to begin the process of application deployment. On successful deployment, the following screen is displayed:



16. Click 'OK' and the following screen is displayed:



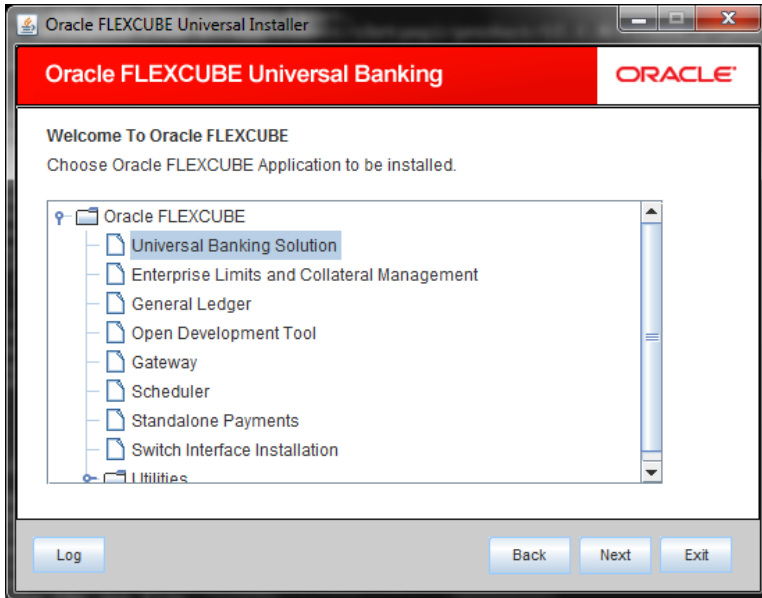
17. If the deployment is not successful, the 'Undeploy' button gets enabled.



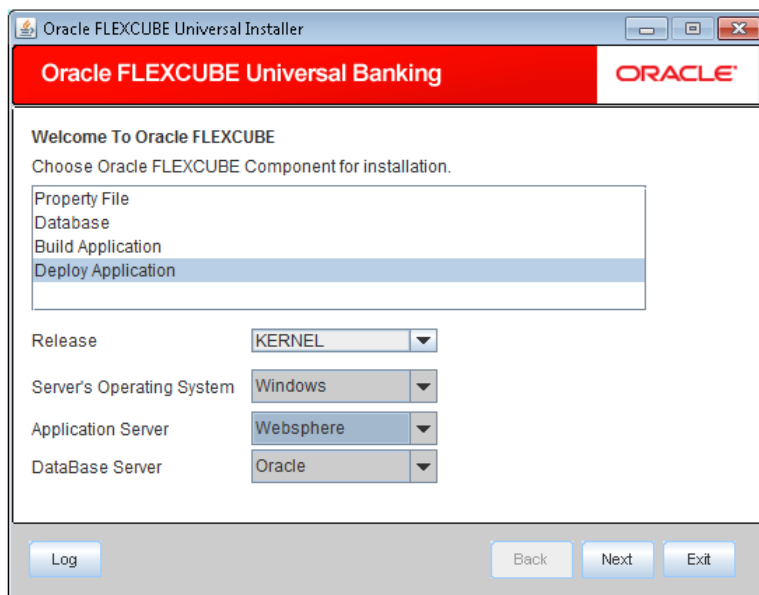
18. Click 'Undeploy' for undeploying the partially deployed EAR from the server.

1.2 UBS Application Partial Deployment

1. Launch Oracle FLEXCUBE Universal Banking Solution Installer.
2. Click 'Next' and the following screen is displayed:



3. Select 'Universal Banking Solution'.
4. Click 'Next' and the following screen is displayed:



5. Select 'Deploy Application'.
6. Specify the following details:

Release

Select the release in which you are installing the FCUBS application. Select the appropriate one from the adjoining drop-down list.

Server's Operating System

Select the server's operating system in which you are installing the FCUBS application. Select the appropriate one from the adjoining drop-down list.

Application Server

Select 'Websphere' from the adjoining drop down list.

Database Server

Select the database server in which you are installing the FCUBS application. Select the appropriate one from the adjoining drop-down list.

7. Click 'Next' and the following screen is displayed:

Name	Value
Admin IP	Not Applicable
Admin Port	Not Applicable
Admin Username	websphere
Admin Password

8. Specify the following details:

Admin IP

Not applicable.

Admin Port

Not applicable.

Admin UserName

Specify the appropriate admin username of the websphere application server.

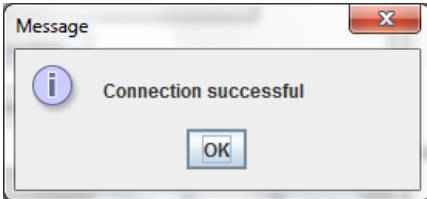
Admin Password

Specify the appropriate admin password of the websphere application server.

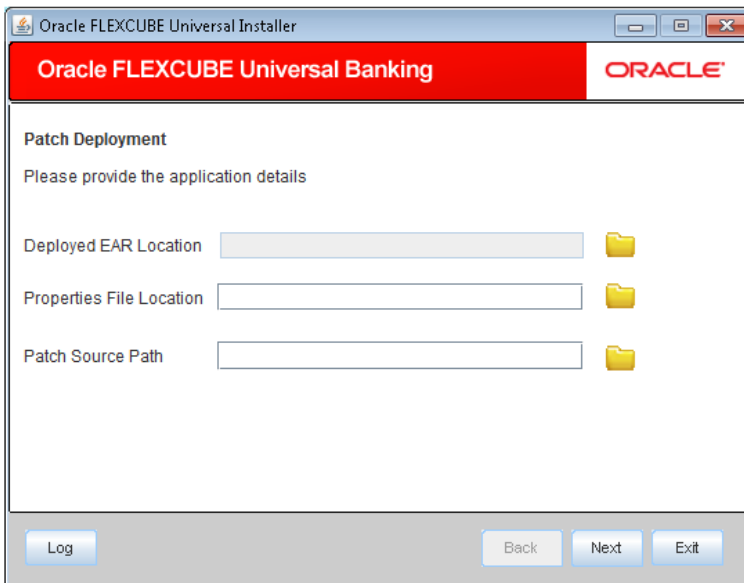
Type of Deployment

Select 'Partial Deployment'.

- Click '**Test Connection**' to test the connection with the application server. On successful connection, the following screen is displayed:



- Click 'OK' and the following screen is displayed:



- Specify the following details:

Deployed EAR Location

Specify a valid deployed EAR location of the application that is to be patched.

Ex. (LINUX) - /IBM/WebSphere/AppServer/profiles/AppSrv01/installedApps/xxxxx-PCNode01Cell/FCUBSApp.ear

Ex. (WINDOWS) - D:\IBM\WebSphere\AppServer\profiles\AppSrv01\installedApps\xxxxx-PCNode01Cell\FCUBSApp.ear

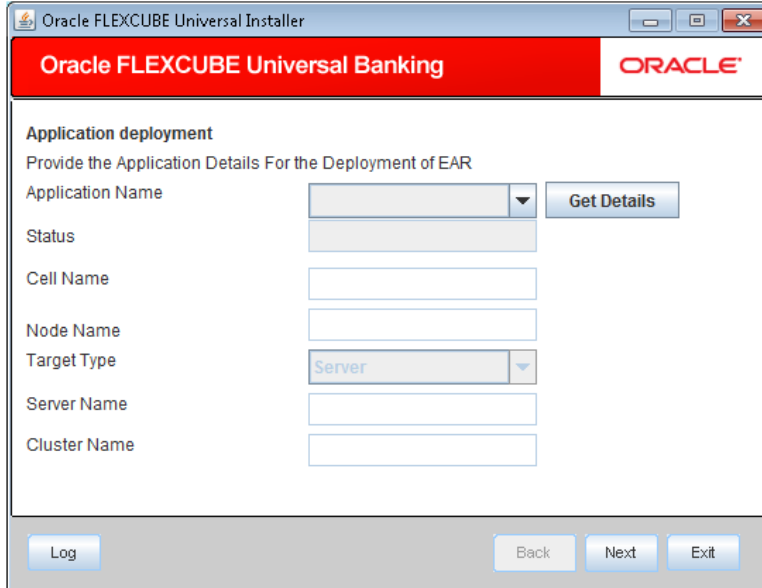
Property File Path

If the property file is internal to the application EAR, it gets displayed here on selection of EAR path. If the property file is external, specify the location. You can use the directory button to browser and select the directory.

Patch Source Path

Specify a valid patch source path.

12. Click 'Next' and the following screen is displayed:



Click on 'Get Details' to list all the applications deployed on websphere application server.



The Installer would take 10-15 seconds of processing time to fetch the details.

Application Name

Select the application to be patched from the drop down.



The Installer would take 7-10 seconds of processing time to fetch the Status, Cell Name and Node Name on selection of the Application Name.

Status

Status gets displayed on selection of the application name.

Cell Name

Cell Name gets displayed on selection of the application name provided the application is UP.

Node Name

Node Name gets displayed on selection of the application name provided the application is UP.

Target Type

Not applicable for Application Partial Deployment.

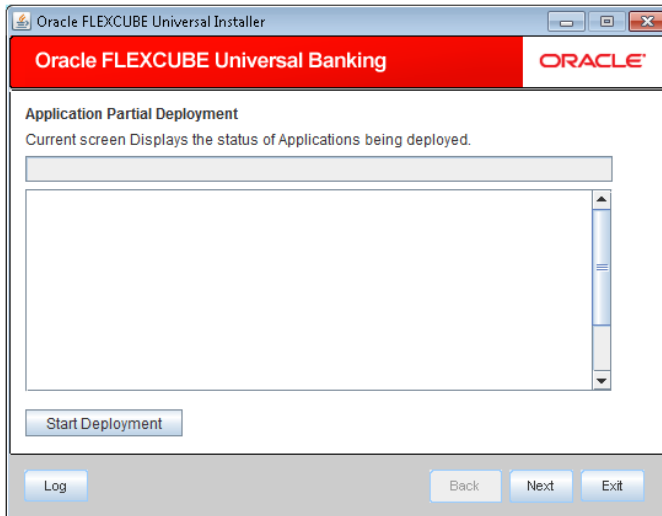
Server Name

Not applicable for Application Partial Deployment.

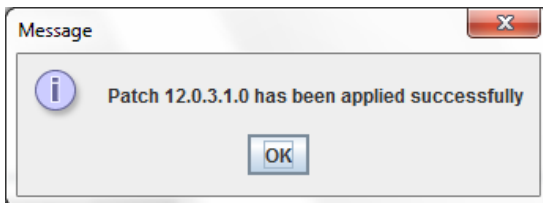
Cluster Name

Not applicable for Application Partial Deployment.

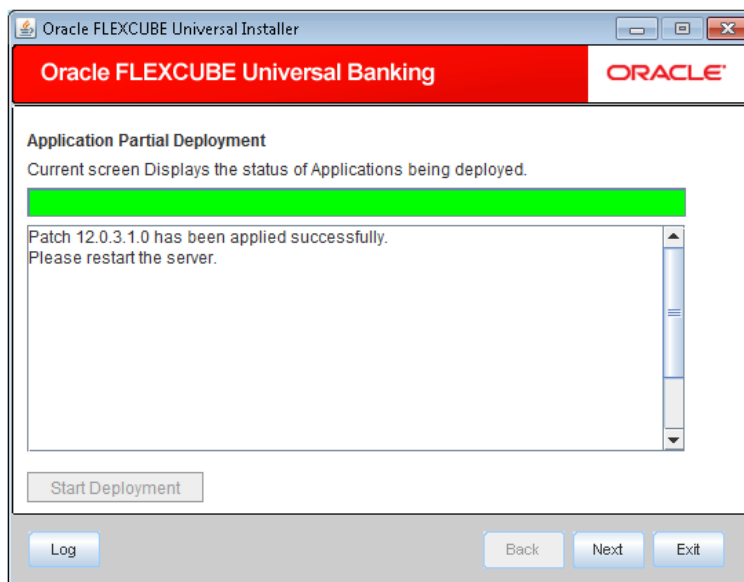
13. Click on “Next” to display the screen below.



14. Click on ‘Start Deployment’ to start the partial/patch deployment. On successful partial deployment, the following screen is displayed:



Click ‘OK’ and the following screen is displayed:



15. Restart the server for changes pertaining to the deployed patch to reflect.



FCUBS Application Deployment in Websphere
[May] [2019]
Version 14.3.0.0.0

Oracle Financial Services Software Limited
Oracle Park
Off Western Express Highway
Goregaon (East)
Mumbai, Maharashtra 400 063
India

Worldwide Inquiries:
Phone: +91 22 6718 3000
Fax: +91 22 6718 3001
<https://www.oracle.com/industries/financial-services/index.html>

Copyright ©[2007], [2019], Oracle and/or its affiliates. All rights reserved.

Oracle and Java are registered trademarks of Oracle and/or its affiliates. Other names may be trademarks of their respective owners.

U.S. GOVERNMENT END USERS: Oracle programs, including any operating system, integrated software, any programs installed on the hardware, and/or documentation, delivered to U.S. Government end users are "commercial computer software" pursuant to the applicable Federal Acquisition Regulation and agency-specific supplemental regulations. As such, use, duplication, disclosure, modification, and adaptation of the programs, including any operating system, integrated software, any programs installed on the hardware, and/or documentation, shall be subject to license terms and license restrictions applicable to the programs. No other rights are granted to the U.S. Government.

This software or hardware is developed for general use in a variety of information management applications. It is not developed or intended for use in any inherently dangerous applications, including applications that may create a risk of personal injury. If you use this software or hardware in dangerous applications, then you shall be responsible to take all appropriate failsafe, backup, redundancy, and other measures to ensure its safe use. Oracle Corporation and its affiliates disclaim any liability for any damages caused by use of this software or hardware in dangerous applications.

This software and related documentation are provided under a license agreement containing restrictions on use and disclosure and are protected by intellectual property laws. Except as expressly permitted in your license agreement or allowed by law, you may not use, copy, reproduce, translate, broadcast, modify, license, transmit, distribute, exhibit, perform, publish or display any part, in any form, or by any means. Reverse engineering, disassembly, or decompilation of this software, unless required by law for interoperability, is prohibited.

The information contained herein is subject to change without notice and is not warranted to be error-free. If you find any errors, please report them to us in writing.

This software or hardware and documentation may provide access to or information on content, products and services from third parties. Oracle Corporation and its affiliates are not responsible for and expressly disclaim all warranties of any kind with respect to third-party content, products, and services. Oracle Corporation and its affiliates will not be responsible for any loss, costs, or damages incurred due to your access to or use of third-party content, products, or services.